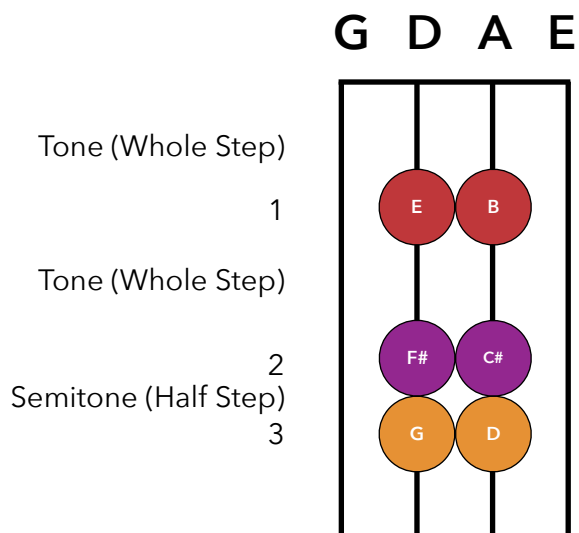


The D Major Scale

A Sequence of Notes, Starting on D

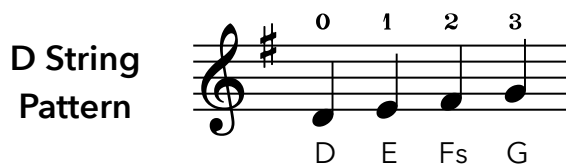
The **D major scale** is made up of the pattern **tone - tone - semitone** on both strings. It is the same pattern as G major, but starting on the D string.



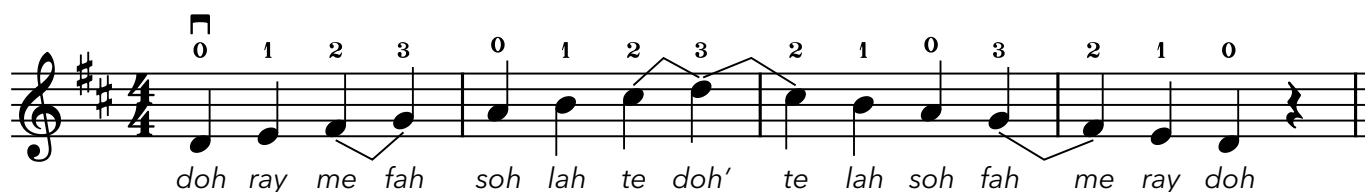
The **D major scale** (1 octave) uses the notes and finger placements you see on the left (Finger Pattern 1).

The pattern on the D string is exactly the same as the pattern on the A string.

Make sure that your 2nd and 3rd fingers are close enough to each other for the half steps (F# to G, and C# to D).



Here are the notes of the **D major scale**. Try playing them slowly.



Activities

- 1) **Sing** the solfa names and then the note names of the scale.
- 2) **Sing** then **play** each note of the scale.
e.g. Sing D - Play D - Sing E - Play E - Sing F# ('Fs') - Play F# etc.
- 3) **Play** the scale using different rhythm patterns, such as:

